

THE BEST LAKE FOR HOUSEBOATING....

...and everything else.

Lake Powell Resorts & Marinas offers the largest fleet of houseboats on the lake for you to enjoy. We also offer the widest selection, guaranteed to meet the needs of you and your group. Choosing the houseboat that's best for you is what this guide is all about. As you'll see, our fleet is conveniently divided into three classes: Economy, for the biggest value; Deluxe, for affordably upgraded amenities; and Luxury, our no-holds-barred models that sleep up to 20, and feature amenities typically found only in luxury homes.

ONE LAKE, TWO WAYS TO EXPERIENCE IT.

Lake Powell Resorts & Marinas offers you two different starting-points for your adventure: uplake at Bullfrog Marina, or downlake at Wahweap Marina. Which you choose is up to you. You can get close to nature—and away from it all—when you houseboat from Bullfrog Marina. There, the canyons are literally at your doorstep, and the seclusion is awe-inspiring. But there's also lodging and a restaurant at Bullfrog, so there's everything you need.

AVERAGE TEMP

| | HI | LOW | WATER |
|-----------|----|-----|-------|
| JANUARY | 45 | 24 | 47 |
| FEBRUARY | 53 | 31 | 46 |
| MARCH | 61 | 36 | 52 |
| APRIL | 72 | 46 | 54 |
| MAY | 82 | 53 | 62 |
| JUNE | 90 | 62 | 70 |
| JULY | 97 | 71 | 76 |
| AUGUST | 94 | 69 | 80 |
| SEPTEMBER | 88 | 60 | 76 |
| OCTOBER | 77 | 46 | 69 |
| NOVEMBER | 59 | 36 | 62 |
| DECEMBER | 45 | 25 | 53 |



CRYSTAL-BLUE WATERS, RED-ROCK CANYONS.



FOR EXTRA FUN, JUST ADD WATERCRAFT!



LET US SUPPLY YOU WITH ALL YOUR TOYS!



MAKE A SPLASH WHEN YOU VISIT!

There is simply no place on earth like Lake Powell. Over 185 miles long, with more shoreline than the entire west coast of the United States, teeming with things to see and do, it's a water destination like no other. There's fishing its sapphire-blue waters, wakeboarding, waterskiing, tubing, hiking, and nearly a hundred canyons to explore. But where should you stay when you visit? When you rent your own houseboat from Lake Powell Resorts & Marinas, the answer is "Anyplace you like."

At Lake Powell Resorts & Marinas, we make houseboating easy and fun. As you page through this guide, you'll learn more about each craft in our fleet, and all that they have to offer. But you'll also learn about how we help you prepare for your excursion, what you'll need to pack, and all the little details we've already thought out for you, so you and your guests can have the most possible fun, and make the best possible memories.

Downlake, at Wahweap Marina, you're right in the middle of countless opportunities for fun. Just as at Bullfrog, you can rent powerboats, personal watercraft (PWCs), and water toys. But there's also expanded lodging and dining, with options from upscale to casual—even aboard your houseboat. There's shopping. Coast Guard-certified captain services. Fishing guides. And much more. Get all the details, see the latest specials, and choose your best starting-point, at www.lakepowell.com.

LAKE POWELL IS QUAGGA AND ZEBRA MUSSEL-FREE.

Unlike other lakes throughout the United States, Lake Powell is free of harmful quagga and zebra mussels, thanks to rigorous monitoring and prevention efforts. You can find inspection and complimentary decontamination stations at Wahweap, Bullfrog, Halls Crossing, and Hite Marinas.



75' ODYSSEY

L

Luxury Class
75' L x 16' W, Approx. 2760 Sq. Ft.,
Sleeps 22
(Max Capacity 12 while under way).

THE ULTIMATE IN LUXURY...

Right on the lake.

This is it. Our ultimate top-of-the-line houseboat, where no luxury has been spared. *Odyssey* is an incredible floating retreat: Over 2,700 square feet of elegance, where you can relax, entertain, and experience Lake Powell in a way that no one else can. Relax by the fireplace. Soak in the hot tub. Or simply escape in any of the four queen-sized staterooms. *Odyssey* is as unique and memorable as Lake Powell itself.

75' ODYSSEY FEATURES:

Cabin/Deck

- Sleeps 12 adults, 10 children
- 4 staterooms with queen beds
- 2 lower berths with queen beds
- Convertible dinette table (sleeps 2)
- Convertible sofa (sleeps 2)
- 3 queen-sized cushions, which accommodate two each, for sleeping up to 6 on upper deck
- Propane fireplace
- Hot tub
- Upper deck driving helm
- Three 3/4 baths
- 32" flat screen TV with tracking satellite;
- 8 TVs with DVD/VCR; 2 stereo systems

Appliances

- Side-by-side electric refrigerator/freezer with water and ice maker
- 30-inch residential gas range
- Dishwasher
- Stackable washer/dryer
- 5 cu. ft. electric chest freezer
- 2 outdoor gas grills (one upper deck, one lower deck)

Mechanical

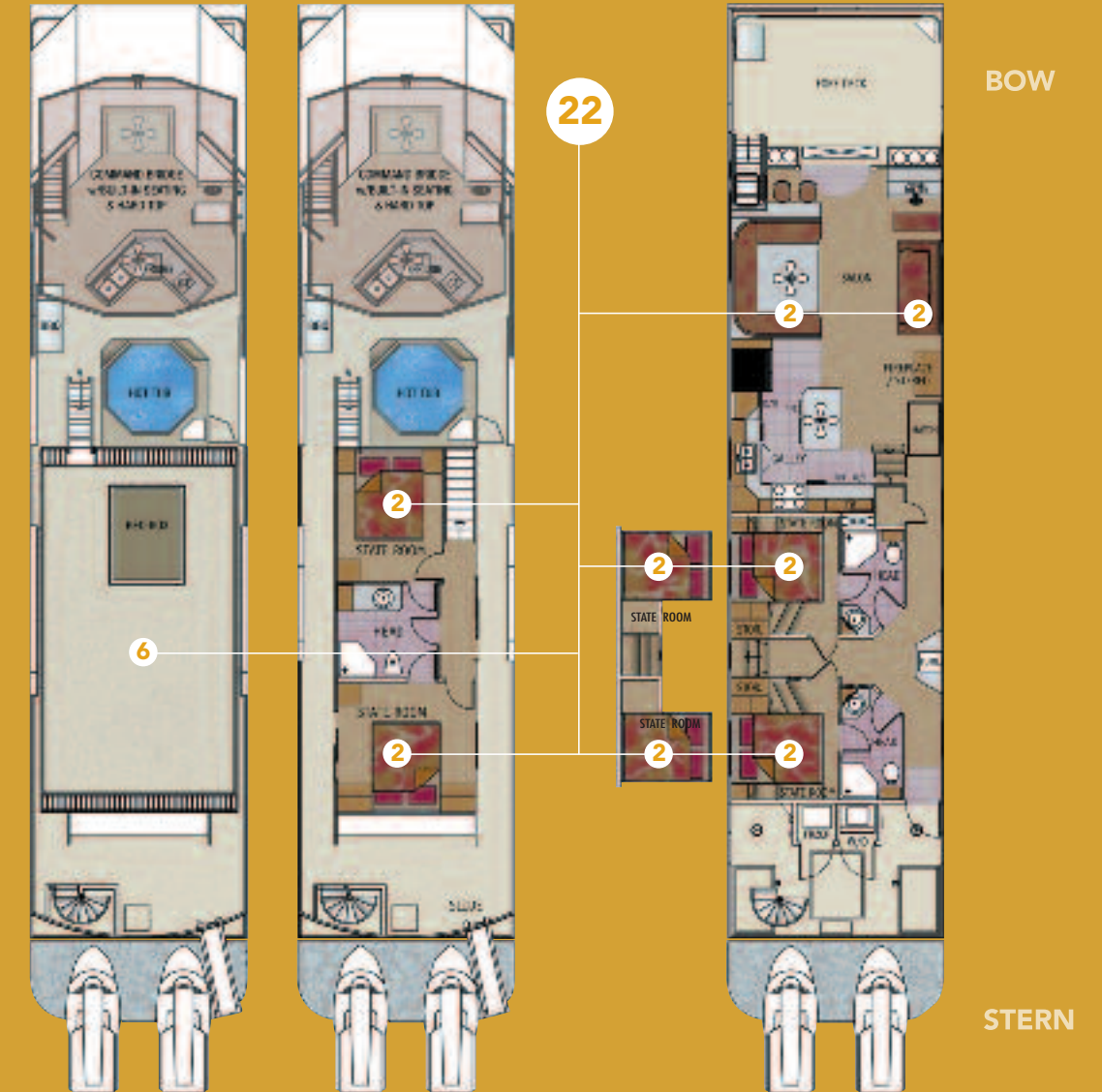
- Central heating and air conditioning
- Electric inverter system
- Remote fuel tank pump (115-gallon capacity)
- Carbon monoxide (CO) detectors

Availability

- Wahweap Marina



THE ULTIMATE HOUSEBOAT: THIS IS WHAT LAKE POWELL LUXURY IS ALL ABOUT.



75' EXCURSION

L

Luxury Class
75' L x 16' W, Approx. 2400 Sq. Ft.,
Sleeps 20
(Max Capacity 12 while under way).

FIND OUT WHY EVERYONE LOVES

This luxury floating getaway



There are plenty of good reasons why the 75-foot *Excursion* is the most popular luxury houseboat in our fleet. Aside from its incredible spaciousness—larger than many houses, and able to sleep up to ten adults plus ten children—it is simply an elegant place to stay on the lake. From its satellite TV and hot tub to its dual gas grills, you'll find everything you want and need. Think of it as a luxurious retreat you can call your own, anywhere on Lake Powell.

75' EXCURSION FEATURES:

Cabin/Deck

- Sleeps 10 adults, 10 children
- 3 staterooms with queen beds
- 2 lower berths with queen beds
- 2 convertible dinette tables (sleeps 4)
- 3 queen-sized cushions, which accommodate two each, for sleeping up to 6 on upper deck
- Propane fireplace
- Hot tub
- Upper deck driving helm
- Two 3/4 baths
- Wide-screen TV with tracking satellite and stereo system

- Deluxe wet bar and mini-fridge with ice maker on the upper deck
- Lighted shade canopy on upper deck

Appliances

- Side-by-side electric refrigerator/freezer with water and ice maker
- 30-inch residential gas range
- Microwave/convection oven
- Dual-temperature wine cabinet
- Dishwasher
- 5 cu. ft. electric chest freezer

Mechanical

- Central heating and air conditioning
- Electric inverter system
- Remote fuel tank pump (115-gallon capacity)
- Carbon monoxide (CO) detectors

Availability

- Wahweap Marina
- Bullfrog Marina

EXTRA ROOM—AND EXTRA LUXURY—FOR YOU AND ALL OF YOUR SPECIAL GUESTS.



BRIDGE DECK

STERN 20

BOW

MAIN DECK



62' JOURNEY

L

Luxury Class

16

62' L x 16' W, Approx. 1984 Sq. Ft.,
Sleeps 16
(Max Capacity 12 while under way).

LUXURY LODGING THAT JUST HAPPENS TO BE

A houseboat

Sleek, modern, and elegant, the 62-foot *Journey* offers luxury accommodations for up to 16, with a versatile floor plan that easily changes from sleeping to entertaining and back again. *Journey* also boasts a panoply of creature comforts—including gas grill, hot tub, central air, and more—making your stay aboard as enjoyable as your Lake Powell explorations.

62' JOURNEY FEATURES:

Cabin/Deck

- Sleeps 8 adults, 8 children
- 3 staterooms with queen beds
- Lower berth with queen bed
- Convertible dinette table (sleeps 2)
- Convertible sofa (sleeps 2)
- 2 queen-sized cushions, which accommodate two each, for sleeping up to 4 on upper deck
- Hot tub
- Upper deck driving helm
- 2 bathrooms
- Wide-screen TV with tracking satellite and stereo system

Appliances

- Side-by-side electric refrigerator
- 30-inch residential range
- Microwave/convection oven
- Dishwasher
- 5 cu. ft. electric chest freezer
- Outdoor gas grill

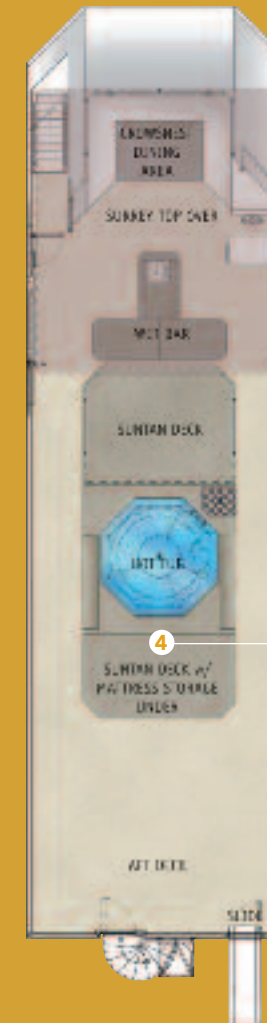
Mechanical

- Central heating and air conditioning
- Remote fuel tank pump (115-gallon capacity)
- Electric inverter system
- Carbon monoxide (CO) detectors

Availability

- Wahweap Marina

LUXURY, SPACE, AND VERSATILITY: *JOURNEY* GIVES YOU IT ALL.



16



BOW

STERN



54' ESCAPE

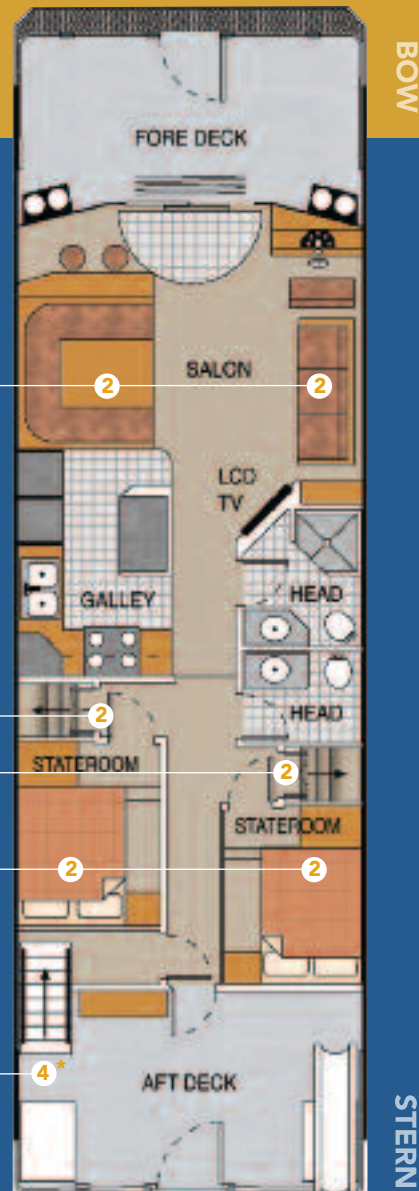
L

16

Luxury Class
54' L x 16' W, Approx. 1728 Sq. Ft.,
Sleeps 16
(Max Capacity 12 while under way)



54' ESCAPE FLOOR PLAN.



BOW

STERN

16*

*Top Deck sleeps 4

59' DISCOVERY

D

16

Deluxe Class
59' L x 16' W, Approx. 1888 Sq. Ft.
Sleeps 16
(Max Capacity 12 while under way)

XL

Platinum



FLOOR PLAN.



BOW

STERN

16*

*Top Deck sleeps 4

OUR MOST AFFORDABLE

Luxury-class houseboat.

54' ESCAPE FEATURES:

Cabin/Deck

- Sleeps 8 adults, 8 children
- 2 staterooms with queen beds
- 2 lower berths with queen beds
- Convertible dinette table (sleeps 2)
- Convertible sofa (sleeps 2)
- Cushions for sleeping on upper deck
- Hot tub
- Upper deck driving helm
- One 3/4 bath and one 1/2 bath
- TV/VCR/DVD in the salon
- Tracking satellite with feed to the salon TV (satellite reception limited)
- CD stereo system on the upper deck

Appliances

- Side-by-side electric refrigerator with freezer
- 30-inch residential gas range
- Microwave/convection oven
- 5 cu. ft. electric freezer
- Dishwasher

Mechanical

- Central heating and air conditioning
- Electric inverter system
- Remote fuel tank pump (115-gallon capacity)
- Carbon monoxide (CO) detectors

Availability

- Bullfrog Marina

OUR CLASSIC DELUXE HOUSEBOAT...

Updated and refined.

59' DISCOVERY XL PLATINUM FEATURES:

Cabin/Deck

- Sleeps 8 adults, 8 children
- 1 queen stateroom, 1 double stateroom
- 2 lower berths with double beds
- 2 full-sized conversion beds in the main cabin (sleeps 4)
- 2 queen-sized cushions, which accommodate two each, for sleeping up to 4 on upper deck
- Deluxe patio furniture on the upper deck
- Upper deck driving helm
- Spiral staircase connects upper and lower decks
- One 3/4 bath and one 1/2 bath, both newly refurbished
- 40-inch flat screen TV with surround sound with DVD player.
- CD stereo system with multi-area speakers

Appliances

- Newly refurbished kitchen with new appliances, flooring, upgraded cabinets, and kitchen island
- Side-by-side electric refrigerator/freezer
- Full-size electric stove
- 2 outdoor gas grills (one upper deck, one lower deck)
- 7.5 cu. ft. electric chest freezer

Mechanical

- Updated central heating and air conditioning
- Electric inverter system
- Remote fuel tank pump (99-gallon capacity)
- Carbon monoxide (CO) detectors

Availability

- Wahweap Marina
- Bullfrog Marina



48' NAVIGATOR

D

Deluxe Class
48' L x 15' W, Approx. 1440 Sq. Ft.,
Sleeps 14
(Max Capacity 12 while under way)

14



LUXURY MEETS VALUE.

53' ADVENTURER

E

Economy Class
53' L x 15' W, Approx. 1590 Sq. Ft.,
Sleeps 12
(Max Capacity 12 while under way)

12



ONE OF OUR BEST FLEET VALUES.

OUR MOST AFFORDABLE

Deluxe-class houseboat.

48' NAVIGATOR FEATURES:

Cabin/Deck

- Sleeps 6 adults, 8 children
- 3 staterooms with double beds
- Convertible dinette table (sleeps 2)
- Convertible sofa (sleeps 2)
- Cushions for sleeping on the upper deck (2 cushions sleep 2 each)
- Upper deck driving helm
- One 3/4 bathroom
- TV/VCR/DVD with home theater system (no TV reception available on Lake Powell)
- CD stereo on the upper deck

Appliances

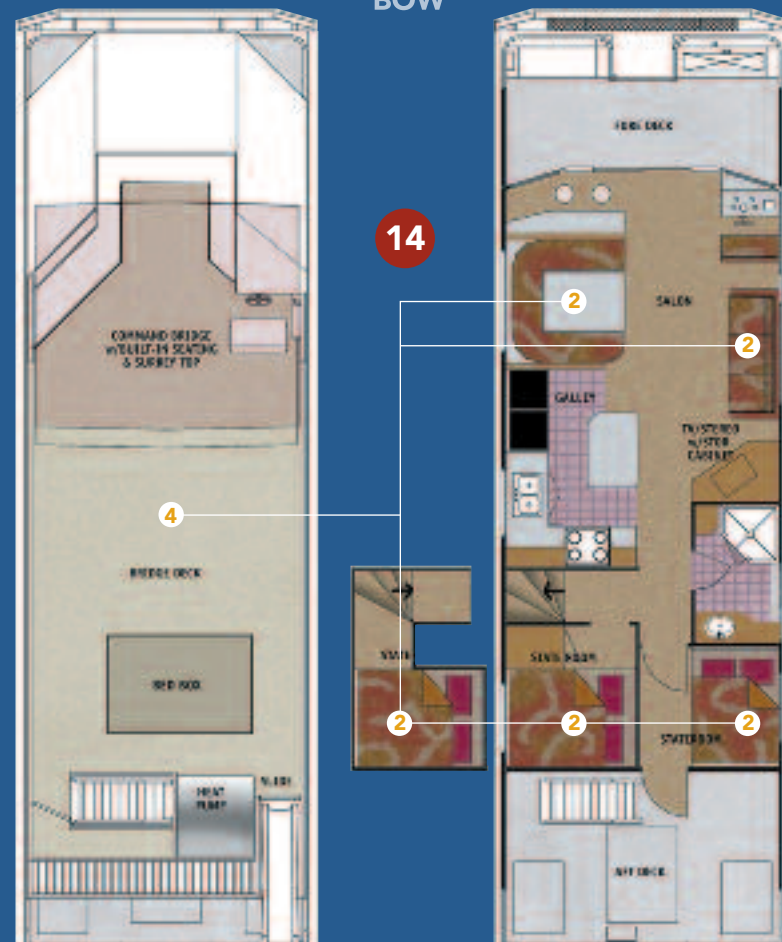
- 2 RV-style refrigerator/freezers
- Full-size gas range

Mechanical

- Central air conditioning in the main cabin
- Electric inverter system
- Remote fuel tank pump (115-gallon capacity)
- Carbon monoxide (CO) detectors

Availability

- Wahweap Marina



STERN

BIG CAPACITY,

Affordable price.

53' ADVENTURER FEATURES:

Cabin/Deck

- Sleeps 8 adults, 4 children
- 2 staterooms with double beds
- 2 lower berths with double beds
- 2 double-sized conversion beds in the main cabin (sleeps 4)
- Two 3/4 baths
- TV/VCR/DVD combo (no TV reception available on Lake Powell)
- CD Stereo

Appliances

- 2 RV-style refrigerator/freezers
- RV-style gas range

Mechanical

- RV-style air conditioning in the main cabin
- Carbon monoxide (CO) detectors

Availability

- Wahweap Marina
- Bullfrog Marina



STERN

BOW



46' VOYAGER XL

E

Economy Class

12

46' L x 15.5' W, Approx. 1426 Sq. Ft.,
Sleeps 12
(Max Capacity 12 while under way)



AFFORDABLE FUN FOR
PARTIES UP TO 12.

46' VOYAGER

E

Economy Class

8

46' L x 15' W, Approx. 1380 Sq. Ft.,
Sleeps 8
(Max Capacity 12 while under way)



THIS NIMBLE CRAFT SLEEPS 8 OR 12.

EXCITING UPGRADES

To a classic craft.

46' VOYAGER XL FEATURES:

Cabin/Deck

- 2 Staterooms with queen beds
- 2 double-sized conversion beds in the main cabin (sleeps 4)
- 2 cushions for sleeping under the stars on the upper deck
- One 3/4 bath
- TV for VHS and DVD playback
(no TV reception available on Lake Powell)
- CD stereo system with multiple speakers
- GPS with 4-inch screen

Appliances

- One 8 cu. ft. RV-style refrigerator/freezer
- RV-style gas range

Mechanical

- RV-style Air Conditioning
- Carbon Monoxide (CO) Detectors

Availability

- Bullfrog Marina

12



BOW

STERN

POPULAR. VERSATILE.

Affordable.

46' VOYAGER FEATURES:

Cabin/Deck

- 2 Staterooms with double beds
- 2 double-sized conversion beds in the main cabin (sleeps 4)
- One 3/4 bath
- TV/VCR/DVD combo
(no TV reception available on Lake Powell)
- CD stereo system with multiple speakers

Appliances

- One 8 cu. ft. RV-style refrigerator/freezer
- RV-style gas range

Mechanical

- RV-style Air Conditioning
- Carbon Monoxide (CO) Detectors

Availability

- Wahweap Marina
- Bullfrog Marina

8



BOW

STERN



46' EXPEDITION

E

Economy Class

10

46' L x 14.5' W, Approx. 1334 Sq. Ft.

Sleeps 10

(Max Capacity 12 while under way)



GREAT FOR SMALLER GROUPS.

PERFECT FOR FAMILIES...

And privacy.

46' EXPEDITON FEATURES:

Cabin/Deck

- 1 stateroom with queen bed
- Convertible dinette table (sleeps 2)
- Convertible sofa (sleeps 2)
- One 3/4 bath
- TV with DVD player (no TV reception available on Lake Powell)
- 2 CD stereo players (in the main cabin and on the upper deck)

Appliances

- 8 cu. ft. RV-style refrigerator/freezer
- Full-size gas range

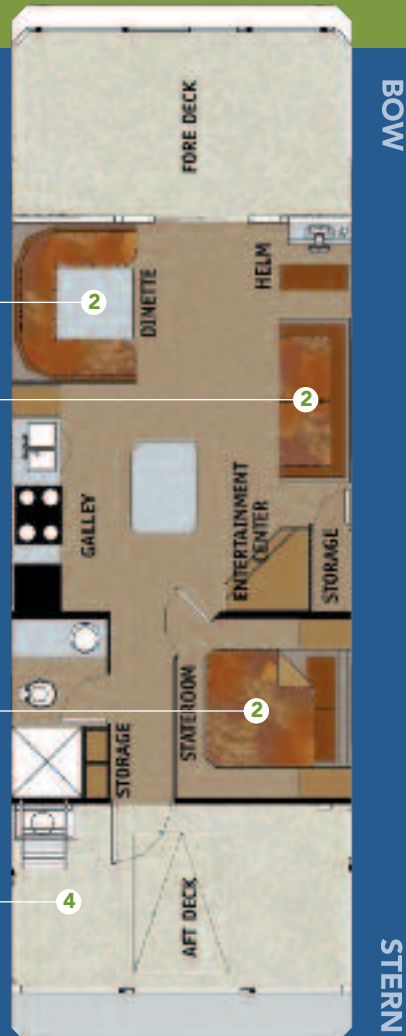
Mechanical

- RV-style air conditioning
- Electric inverter system
- Carbon monoxide (CO) detectors

Availability

- Wahweap Marina (Dual Engine)
- Bullfrog Marina (Single Engine)

10



STAY LONGER,
DO MORE...

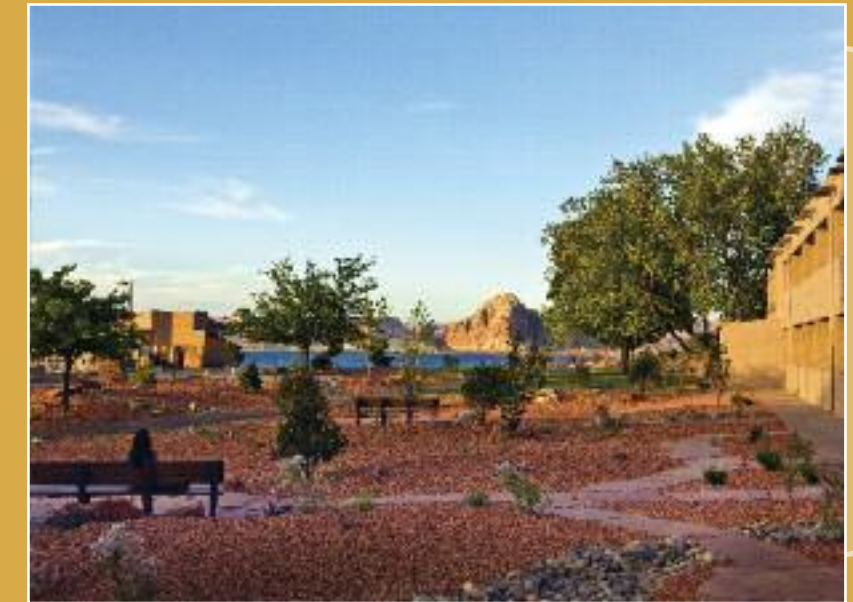
Have more fun.



POWER+WATER=EXTRA FUN!

Whoever said that your houseboat getaway should start and end at your houseboat? With Lake Powell Resorts & Marinas, there's no need to limit your options. In fact, there barely *is* any limit. For example, you could check in early—or stay late—at either of our lakefront lodges, and enjoy the dining, shopping, and extra relaxation. And you can certainly avail yourself—as most of our guests do—to our fun-spined selection of watercraft and water toys.

Explore the lake, from your houseboat base, in a speedy powerboat runabout. Or add more power, and rent a boat that can really kick up a wake for waterskiing. Not to mention wakeboarding or tubing; we offer those, too. And that's in addition to the fast-paced fun of personal watercraft, or the incomparable serenity of one-and two-person kayaks, giving you and your guests a quiet and intimate connection with the lake.



LAKE POWELL'S ONLY LAKEFRONT LODGING

Lake Powell Resorts & Marinas is about more than just equipment. Our friendly, professional staff are eager to help you make the most of your houseboat stay. Consider exciting options like your own fishing guide, private kayaking tours, Coast Guard-certified captain services to pilot your houseboat, convenient and delicious meals-on-board, and so much more. Visit www.lakepowell.com, or call (800) 528-6154, to include everything you've ever wanted.





NOW THIS IS LIVING...

Lake Powell Style.

But there's so much more. Take a dip in the pool. Book a tour to historic Rainbow Bridge. Enjoy a dinner cruise aboard our *Canyon Princess* yacht. Explore Indian ruins dating back a thousand years, and dinosaur tracks which date back millions. Or avail yourself to activities such as golf, shopping, and horseback riding, all right nearby. We look forward to seeing you here—and ensuring that your stay is the best it can be.

HAVE FUN,
Be safe.

At Lake Powell Resorts & Marinas, nothing is more important to us than your safety. Make the most of your houseboat vacation by checking out the valuable safety tips underneath this flap.



RED ROCKS MEET SAPPHIRE BLUE.



EXCLUSIVE LAKEVIEW ROOMS.



BEAUTIFUL VIEWS AT DRIFTWOOD LOUNGE.

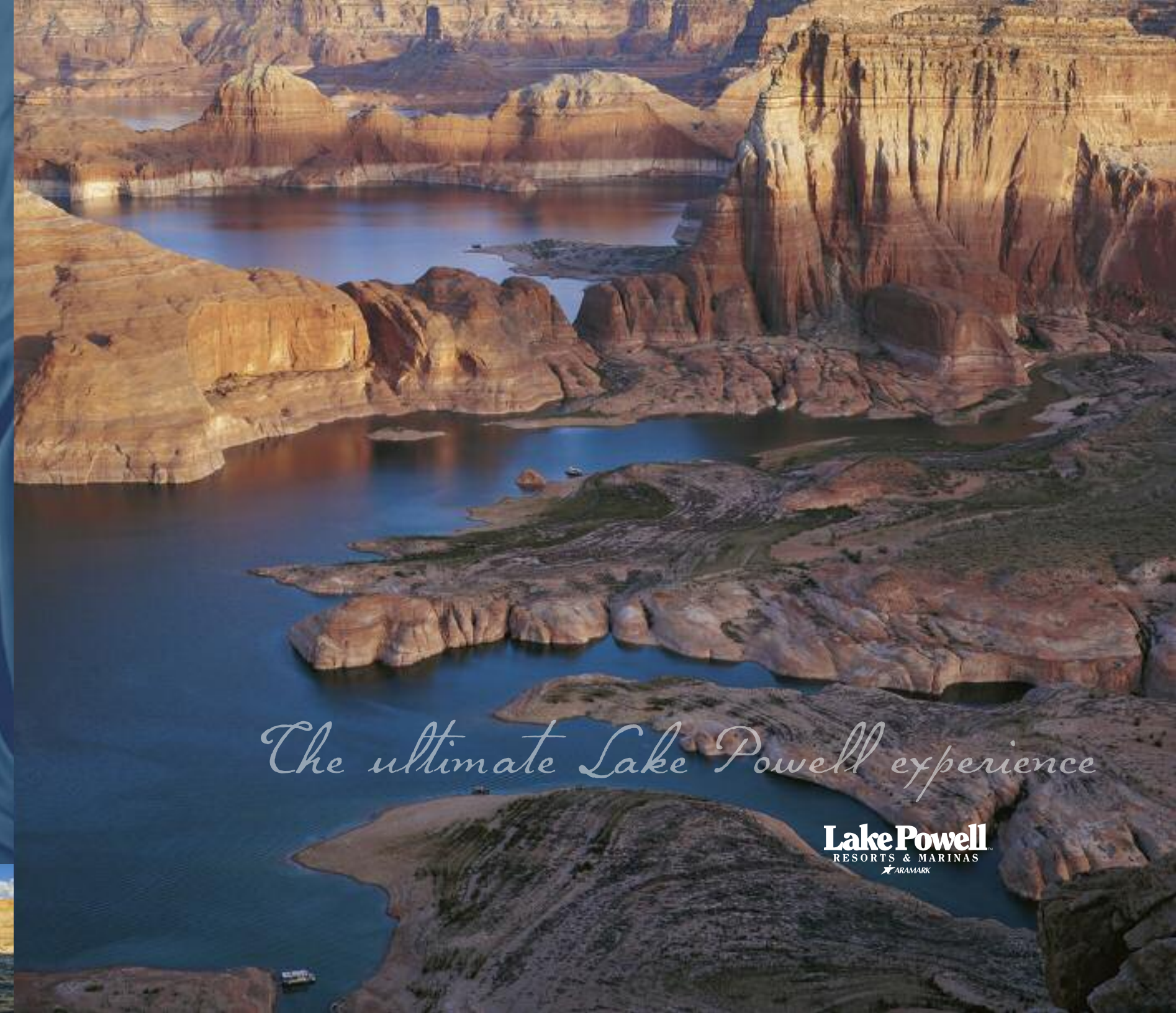
In addition to the largest houseboat fleet on the lake, Lake Powell Resorts & Marinas offers the only lakefront lodging, with tastefully appointed rooms packed with amenities. So you can extend your stay, and enjoy all that we have to offer ashore, too. At Wahweap, you'll find fine dining in The Rainbow Room, casual dining at Driftwood Lounge, and family fare at Wahweap Grille; there's also the Anasazi Restaurant at the Defiance House Lodge at Bullfrog Marina.

For more information call
1-800-528-6154
or visit Lake Powell Resorts & Marinas
Boat Rental Office.
www.lakepowell.com

Lake Powell
RESORTS & MARINAS
ARAMARK

Lake Powell Resorts & Marinas, managed by ARAMARK, is an authorized concessioner of the National Park Service, Glen Canyon National Recreation Area. ♻️ Printed on recycled paper using environmentally-friendly inks.

HOUSEBOAT RENTAL PLANNING GUIDE



The ultimate Lake Powell experience

Lake Powell
RESORTS & MARINAS
ARAMARK



BE PREPARED... FOR THE TIME OF *your life*

Whether it's your first time or you've houseboated before, be sure to use this handy checklist to make sure you bring everything you need.

- Reservation confirmation paperwork; photo ID for the person holding the contract.
- First aid kit: Insect repellent, aspirin, antacids, eye drops, bandages, antiseptic, etc.
- Sun protection: Sunscreen, lip balm with sunscreen, hats, sun visors, and sunglasses.
- Insect-repellent candles.
- Paper plates, paper cups, and plastic utensils (regular dishes, cups, and utensils are provided; still, the disposable kind can prove handy).
- Paper towels and kitchen towels (certain houseboat models include a limited supply of kitchen towels).
- Plastic containers or self-closing plastic bags for storing leftovers.
- Meals, drinks, snacks, seasonings, condiments (or call us to order Meals On Board, with everything you need, delivered straight to your boat! Wahweap Marine Only).
- Disposable aluminum pie plates (to place on anchor lines and prevent land critters from boarding your houseboat).
- Small ice chest: to store all the fish you'll catch!
- Sleeping bags.
- Seasonal clothing.



GO AHEAD. MAKE WAVES.

- Linens provided on all houseboats at Wahweap Marina. Bullfrog Marina only supplies them on 75' Excursion, 59' Discovery XL Platinum, 54' Escape.
- Lounge chairs and folding beach chairs (a limited number of lounge chairs and deck chairs are provided, depending on the houseboat model).
- Tent or canopy with poles: to create a shaded area on the beach.
- Firewood for evening fires; available for purchase at our marina stores.
- Kerosene lamps, battery lamp, or flashlight: for extra light on the beach after dark.
- Fishing license, tackle, and poles—to help catch your dinner! Our marina stores offer licenses for purchase (or get yours online before you come, to avoid delays), as well as fishing equipment rentals.
- Water skis, wakeboard, ski tube, and kneeboard: also available for rent.
- Binoculars: to spot buoys, view wildlife, and find the perfect beach.
- Camera, batteries, film/storage cards: to help capture the memories forever.
- Leisure entertainment: Musical instruments, playing cards, and games; books and magazines; and favorite CDs and videos (while all houseboat models include CD players, some also feature DVD or VHS players).

CHOOSE YOUR CATEGORY:

- **Economy:** Get a comfortable houseboat, and an unbeatable value. Entry-level pricing makes these boats especially affordable.
- **Deluxe:** Enjoy upgraded amenities and equipment, yet still get tremendous value for you and your group.
- **Luxury:** Stay in your own private pleasure palace on Lake Powell—with uncompromised elegance, style, and upgrades such as hot tubs, gourmet kitchens, fireplaces, and satellite TV.

| FEATURES | 75' ODYSSEY | 75' EXCURSION | 62' JOURNEY | 54' ESCAPE | 59' DISCOVERY XL PLATINUM | 48' NAVIGATOR | 53' ADVENTURER | 46' VOYAGER XL | 46' VOYAGER | 46' EXPEDITION |
|----------------------------------|-----------------------|-----------------------|-----------------------|-----------------------|---------------------------|-----------------------|-----------------------|-----------------------|-----------------------|----------------------|
| STATEROOMS | 4Q | 3Q | 3Q | 2Q | 1Q 1D | 2D | 2D | 2D | 2D | 1Q |
| LOWER BERTHS | 2Q | 2Q | 1Q | 2Q | 2D | 1D | 2D | | | |
| MAIN CABIN CONVERSION BEDS | 2 | 2 | 2 | 2 | 2 | 2 | 2 | 1 | 2 | 2 |
| BATHROOMS | 3 | 2 | 2 | 2 | 2 | 1 | 2 | 1 | 1 | 1 |
| SHOWERS | 3 | 2 | 2 | 1 | 1 | 1 | 2 | 1 | 1 | 1 |
| CUSHIONS FOR UPPER DECK | ✓ | ✓ | ✓ | ✓ | ✓ | ✓ | | ✓ | | ✓ |
| SATELLITE TV | ✓ | ✓ | ✓ | ✓ | | | | | | |
| TV/VCR/DVD | ✓ | ✓ | ✓ | ✓ | ✓ | ✓ | ✓ | ✓ | ✓ | ✓ |
| STOVE | FSG | FSG | FSG | FSG | FSE | FSG | RV | RV | RV | FSG |
| CHEST FREEZER | ✓ | ✓ | ✓ | ✓ | ✓ | ✓ | | | | |
| GPS | ✓ | ✓ | ✓ | ✓ | ✓ | ✓ | | ✓ | | |
| UPPER DECK DRIVING HELM | ✓ | ✓ | ✓ | ✓ | ✓ | ✓ | | | | |
| UPPER DECK WET BAR & MINI FRIDGE | ✓ | ✓ | ✓ | ✓ | ✓ | | | | | |
| PROPANE FIREPLACE | ✓ | ✓ | | | | | | | | |
| HOT TUB | ✓ | ✓ | ✓ | ✓ | | | | | | |
| OUTDOOR GAS GRILL | 2 | 2 | 1 | 1 | 2 | 1 | 1 | 1 | 1 | 1 |
| REMOTE FUEL TANK PUMP | ✓ | ✓ | ✓ | ✓ | ✓ | ✓ | | | | |
| ELECTRIC INVERTER SYSTEM | ✓ | ✓ | ✓ | ✓ | ✓ | ✓ | | | | ✓ |
| PWC (PERSONAL WATER CRAFT) RAMP | ✓ | | | | | | | | | |
| FUEL CAPACITY/FUEL CONSUMPTION | 460 gal/ 16 per hr | 345 gal/ 16 per hr | 345 gal/ 12 per hr | 345 gal/ 12 per hr | 389 gal/ 12 per hr | 230 gal/ 10 per hr | 170 gal/ 10 per hr | 170 gal/ 10 per hr | 170 gal/ 10 per hr | 230 gal/ 8 per hr |

FSG = FULL SIZE GAS
FSE = FULL SIZE ELECTRIC
RV = RECREATIONAL VEHICLE

■ LUXURY ■ DELUXE ■ ECONOMY

Selecting the right houseboat for you is all about anticipating your needs and working with your budget. First, you'll need to know how many people are in your group, because that will determine the size of the craft you need to rent. And note that our houseboats typically sleep more when at anchor than they do while under way; that's due to Coast Guard regulations. Next, you'll need to decide which houseboat category—Economy, Deluxe, or Luxury—provides you and your group with

the optimum combination of luxury and value to meet your budget. Once you've done that, simply use the color-coded chart above to narrow your choice to the exact houseboat for you. Any questions? Call our friendly professional staff at (800) 528-6154. We're always here to help.

HOUSEBOATING'S MORE FUN WHEN *safe.* YOU PLAY IT



At Lake Powell Resorts & Marinas, we take safety seriously. And so should you. To help, we give you a free safety orientation, provided by one of our qualified instructors, when you rent your houseboat. We've also listed some of the most important things you should be aware of, right here:

LIFE JACKETS.

Every houseboat we rent comes with life jackets for everyone on board. And state law requires that every passenger age 12 and younger wear them. We can help you learn the different types, and which are best for you and your group, as well as how to wear them properly. Incidentally, life jackets make water activities more fun, since they require the wearer to expend less energy to keep afloat.

CARBON MONOXIDE.

Carbon monoxide (CO) is an odorless, tasteless, and colorless

gas. And it's dangerous. Boat engines and generators both produce CO, so you need to be careful—especially because early symptoms of CO poisoning (such as headache, nausea, and dizziness) can be mistaken for sea-sickness or intoxication. All our houseboats are equipped with CO venting and alarm systems that exceed federal requirements. Still, *never swim around a boat when the engine or generator is running.*

BE PROP-AWARE.

Do not swim behind a boat when the engine is running. Exercise caution when re-boarding the boat after a deep-water swim. Pull out of high-traffic areas. Stop the engine and then use the step(s) provided to get back into the boat, and don't step on any part of the engine: contact with a rotating propeller or stepping on a sharp prop blade can cause severe injury.

OTHER GOOD IDEAS.

As with a car, don't drink and drive. Lake Powell is in the high desert, so keep hydrated, and bring sun protection. Keep a radio tuned for weather changes. Be sure to heed all navigation buoys. And always anchor at night.