



POWERBOATS AND WATER TOY RENTALS

Play at your own pace.



POWERBOATS

ALL-PURPOSE BOAT – perfect for cruising the lake, fishing, tubing or entry-level skiing

BAJA SKI BOAT – provides more power for intermediate to advanced skiing

36' WEEKENDER – the ultimate home base for any party

WAKEBOARDING BOAT – ideal for wakeboarding and advanced skiing

All powerboats seat 7 or 8 people and are available at Wahweap Marina.



WATER TOYS

Personal Watercraft (Jet Ski)
Wakeboards
Kneeboards
Water skis
Ski tubes
Kayaks

If you already own a boat, we offer overnight slip rentals and free parking with space for your trailer. Also, be sure to take advantage of our complimentary boat decontamination stations and help us protect the lake from zebra mussels.



RV PARK AND CAMPGROUND

Located just 1/4 mile from the shore of Lake Powell in the Wahweap Marina, the RV Park and Campground provides a perfect place to call home while you enjoy all that Lake Powell has to offer. Each site has a picnic table, charcoal grill and/or fire ring. There are restrooms in each loop and free Wi-Fi throughout the campground.

Here you're also close to the Lake Powell Resort, featuring several restaurants and a gift shop.



FULL HOOK-UP SITES

(139) IN LOOPS A, B, C, D, F

- 30- and 50-amp service, water and septic
- Accommodate 45' to 70' RVs – only two vehicles per site (some double-wide spaces available)
- 60 extra-large pull-through sites

TENT OR SELF-CONTAINED RV SITES

(112) IN LOOPS 1, 2, 3, 4

- Some accommodate up to a 40' RV
- Limited extra parking in the campground



GROUP TENT AREA

(6) IN LOOP G

- Can accommodate 9 to 30 people per site

NATURAL BEAUTY SURROUNDS YOU



DINING OPTIONS Whether you want a gourmet meal or a quick bite to eat, you'll find something to suit your taste.



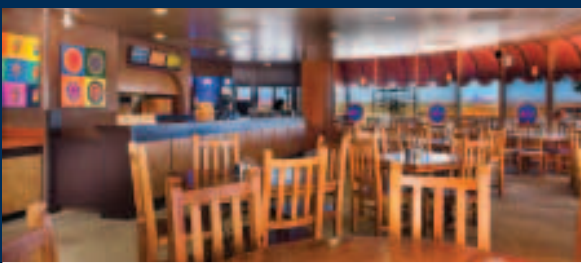
RAINBOW ROOM

To start your day, choose from fresh fruit, pastries, pancakes and eggs from our breakfast buffet. Later, indulge in entrees such as fresh fish, flame-broiled beef and a tasty selection of vegetarian fare. While the atmosphere is sophisticated, you're welcome to come as you are.



DRIFTWOOD LOUNGE

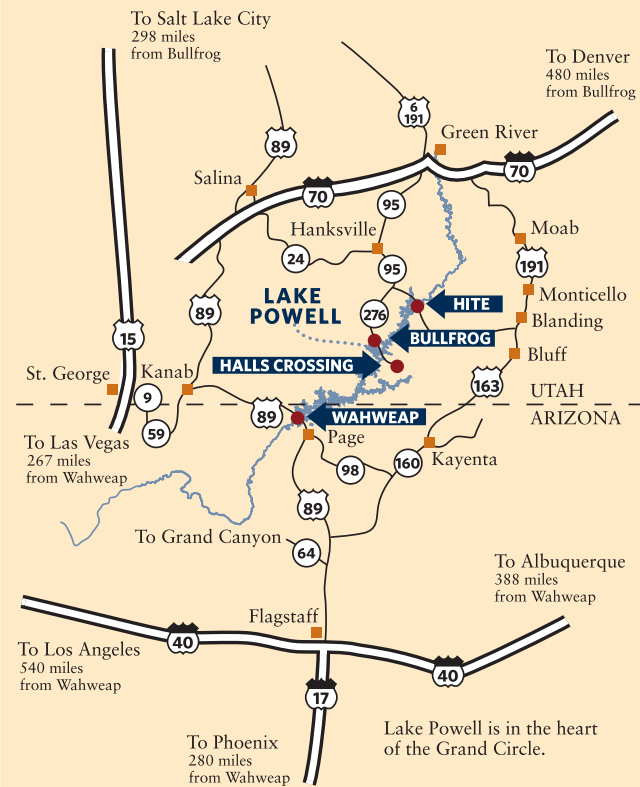
The relaxing atmosphere is perfect for hanging out with friends to trade stories or watch the game. Choose from a variety of pub entrees and appetizers accompanied by a beer, wine or cocktail.



WAHWEAP GRILLE

Perfect for families, the Wahweap Grille offers mouthwatering hamburgers and pizza. Enjoy yours inside, on the outdoor patio or take it with you.

LAKE POWELL RESORTS AND MARINAS, ARIZONA



LAKE POWELL RESORTS & MARINAS

100 LAKESHORE DRIVE | PAGE, AZ 86040

Driving directions:

From the north: Highway 89 South past Greentown, AZ. Turn left at mile marker 554 into Wahweap North Entrance Glen Canyon National Recreation Area. Proceed to entry booth where you will pay for park entrance or show your annual pass.

From the south: Highway 89 North through Page, AZ, and over the Glen Canyon Dam. Turn right 4/10 of a mile past mile marker 550 into Wahweap South Entrance Glen Canyon National Recreation Area. Continue to entry booth where you will pay to enter the park or show your annual pass.



©2012 ARAMARK Parks and Destinations
Lake Powell Resort & Marinas
100 Lakeshore Drive | Page, AZ 86040

The South Lake Area of Lake Powell, Arizona

Lake Powell
RESORTS & MARINAS
ARAMARK

Discover

A PLAYGROUND LIKE NO OTHER.



LODGING The Lake Powell Resort is located in the Wahweap Marina, close to all the activities. Here you can choose from four different room sizes and styles. And each comes with the comforts of home, like cable TV, a mini refrigerator, coffeemaker, hair dryer and alarm clock.



SPACIOUS LAKEVIEW SUITE
VIEWS OF LAKE POWELL FROM A TWO-ROOM SUITE

Enjoy a gorgeous view of Lake Powell from a two-room suite offering lots of space to spread out and settle in.



LAKEVIEW ROOM
PREMIUM VIEWS OF LAKE POWELL FROM YOUR OVERSIZED PATIO OR BALCONY

Soak up postcard vistas of Lake Powell, including Wahweap Bay, Lone Rock, and Castle Rock, while you enjoy upgraded furnishings and amenities like mini fridge, cable TV, coffee maker, hair dryer, and more.



MARINA VIEW ROOM
DIFFERENT INSPIRING VIEWS, SAME UPSCALE AMENITIES

Take in the whole marina, along with views of Tower Butte, Antelope Island, and Navajo Mountain from your oversized patio or balcony, with the same upgraded furnishings and amenities of the Lakeview Room.



TRADITIONAL ROOM
ALL THE COMFORTS OF HOME

Relax after a busy day in this comfortable, more economical room.



BOAT TOURS Sit back, relax and take in the views. We'll take it from there.



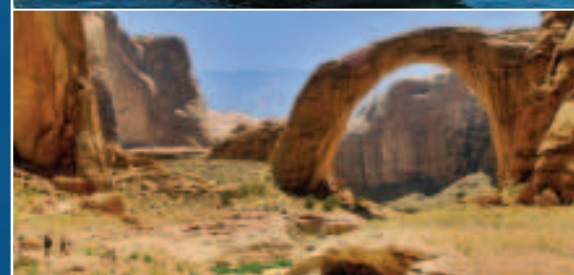
ANTELOPE CANYON CRUISE

On this 1.5-hour cruise from Wahweap Bay, you'll follow the original path of the Colorado River into the famed canyon found on the Navajo Nation. This high-walled sandstone sidearm of the lake is famous for its coloration.



CANYONS ADVENTURE CRUISE

This 2.5-hour cruise encompasses both Navajo and Antelope Canyons to let you experience the best of the south lake area. You'll enjoy an excursion through twisting Antelope Canyon, featuring an amazing view of Glen Canyon Dam. The highlight is the beautiful Navajo Tapestry-laden walls of Navajo Canyon.



RAINBOW BRIDGE CRUISE

Approximately 6 hours long, this is an excursion like no other. The cruise includes 50 miles of the lake on the way to the Rainbow Bridge National Monument. Then, the tour boat docks and you'll enjoy a moderate mile-plus hike to Rainbow Bridge - an amazing sight reaching 290 feet into the sky and 275 feet across Bridge Canyon.



CANYON PRINCESS DINNER CRUISE

During this 2-hour cruise, the spectacular views of Lake Powell will provide the ambience as you enjoy a fantastic meal. In keeping with the casual atmosphere of the American West, there is no dress code.



OTHER THINGS TO DO

On and off the water, there's plenty to see and do at Lake Powell.

LAKE POWELL EXPLORER PROGRAM

The Explorer Program has fun, educational activities for kids and parents to do together, including Discovery Hikes, Word Puzzles, a trip to Glen Canyon Visitor Center and Alphabet Hunt. All activities are designed to teach kids about Lake Powell as a natural resource, the animals and flora in the area and safety. This program is complimentary to families staying in the resort, RV Park and Campground or on a houseboat.

GUIDED FISHING EXCURSIONS

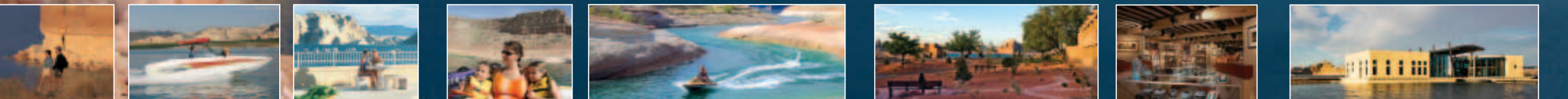
Drop a line with a top-ranked fishing guide. Full-day (includes lunch), half-day and hourly excursions are available.

OTHER ACTIVITIES

- Bike rentals
- Horseback Riding
- Lake Powell National Golf Course
- Half-Day Colorado River Float Trip
- Carl Hayden Visitor Center (at the Glen Canyon Dam)
- John Wesley Powell Museum
- Evening Ranger Programs

Visit lakepowell.com/activities for more information.

Experience the lake the way you want.



Let Us Help Plan Your Trip!

For more information or to book your reservation visit lakepowell.com or call 1-800-528-6154.